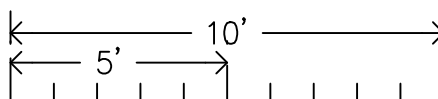
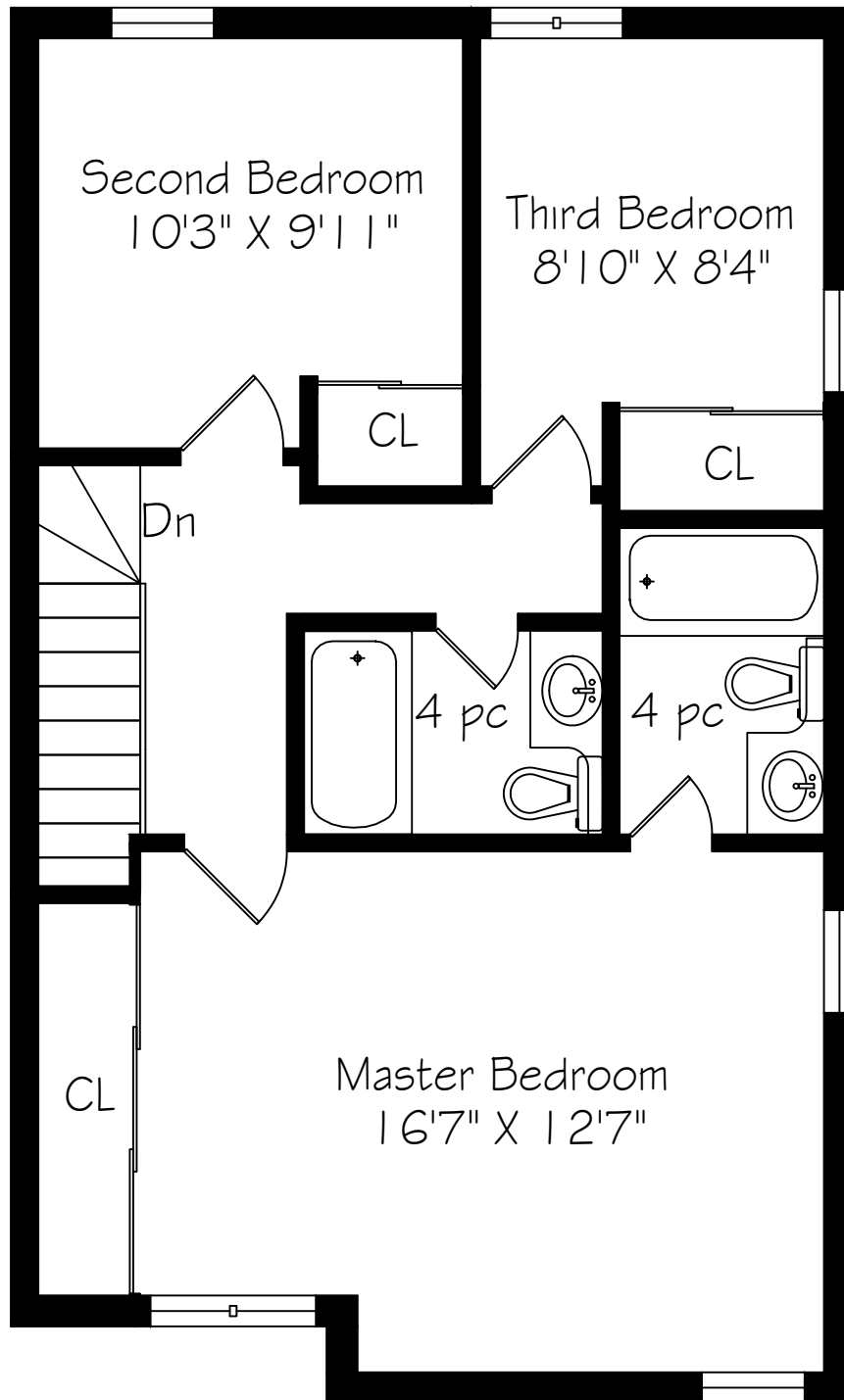


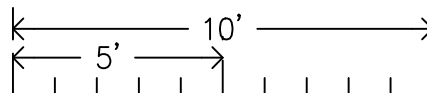
Main Floor
670 Square Feet



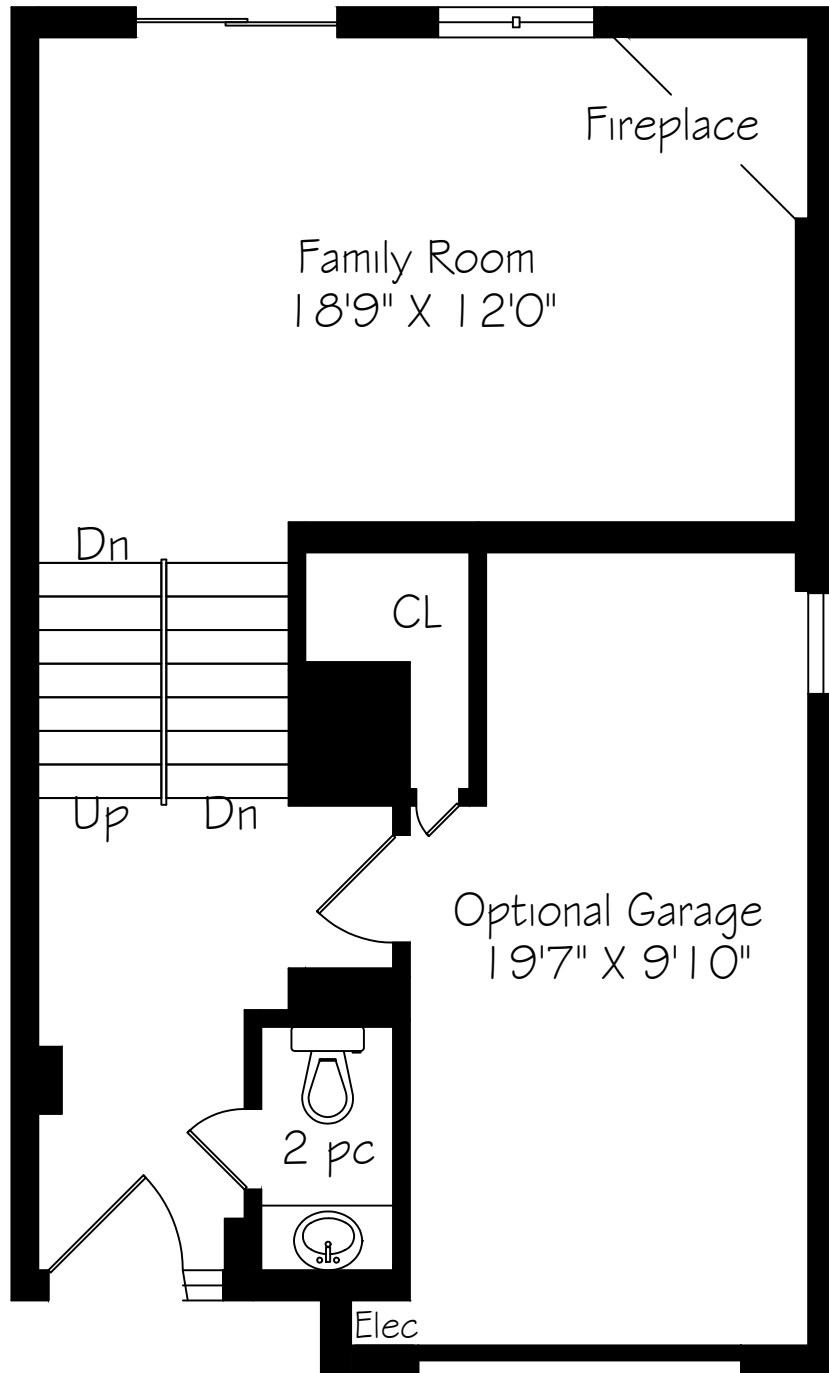
Measurements and Calculations are approximate
To be used as guidelines only



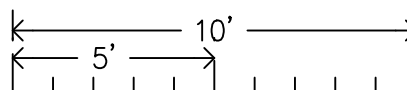
Second Floor
670 Square Feet



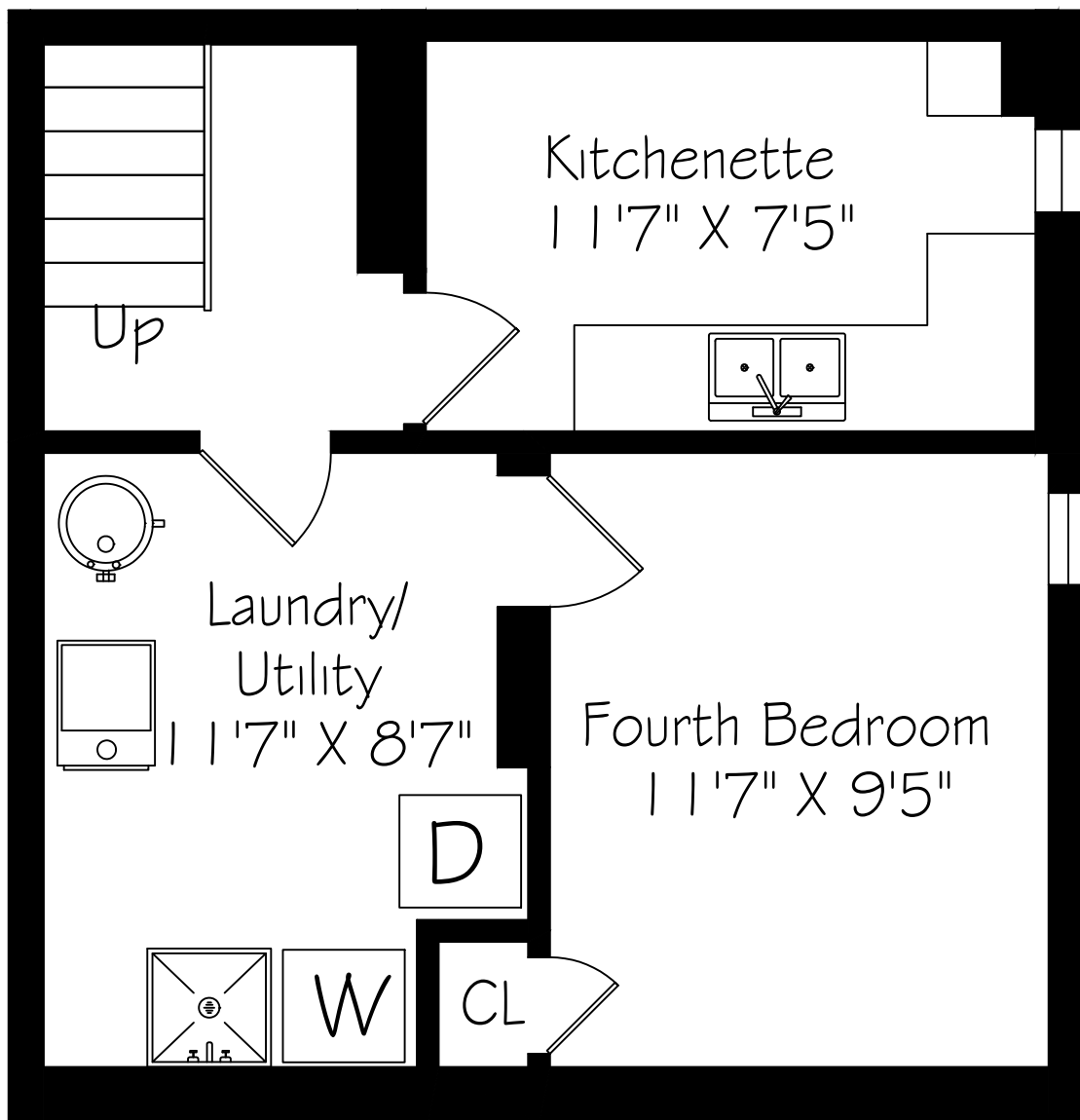
Measurements and Calculations are approximate
To be used as guidelines only



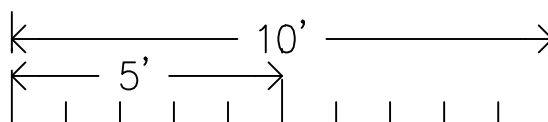
Lower Level
472 Square Feet



Measurements and Calculations are approximate
To be used as guidelines only



Basement
427 Square Feet



Measurements and Calculations are approximate
To be used as guidelines only

Metric Conversions for 11 Sylvan Valleyway

Measurements and Calculations are approximate

To be used as guidelines only



www.measuredup.ca

416-985-9859

	IMPERIAL					METRIC				
Main Floor	670	sf				62	sqm		Ceiling Height	8'1"
Kitchen	11'	3"	x	9'	0"	3.43	x	2.74		
Breakfast Area	7'	10"	x	7'	1"	2.39	x	2.16		
Living Room	19'	1"	x	11'	11"	5.82	x	3.63	Ceiling Height	11'1"
Dining Room	12'	5"	x	10'	10"	3.78	x	3.30		
Second Floor	670	sf				62	sqm		Ceiling Height	7'6"
Master Bedroom	16'	7"	x	12'	7"	5.05	x	3.84		
4 pc	7'	5"	x	4'	11"	2.26	x	1.50		
Second Bedroom	10'	3"	x	9'	11"	3.12	x	3.02		
Third Bedroom	8'	10"	x	8'	4"	2.69	x	2.54		
4 pc	7'	3"	x	4'	11"	2.21	x	1.50		
Lower Level	472	sf				44	sqm		Ceiling Height	8'0"
Family Room	18'	9"	x	12'	0"	5.72	x	3.66		
2 pc	6'	0"	x	3'	3"	1.83	x	0.99		
								0.00		
Basement	427	sf				40	sqm		Ceiling Height	7'1"
Fourth Bedroom	11'	7"	x	9'	5"	3.53	x	2.87		
Kitchenette	11'	7"	x	7'	5"	3.53	x	2.26		
Laundry/Utility	11'	7"	x	8'	7"	3.53	x	2.62		
Total Square Footage	2239	sf				208	sqm			March 4, 2019