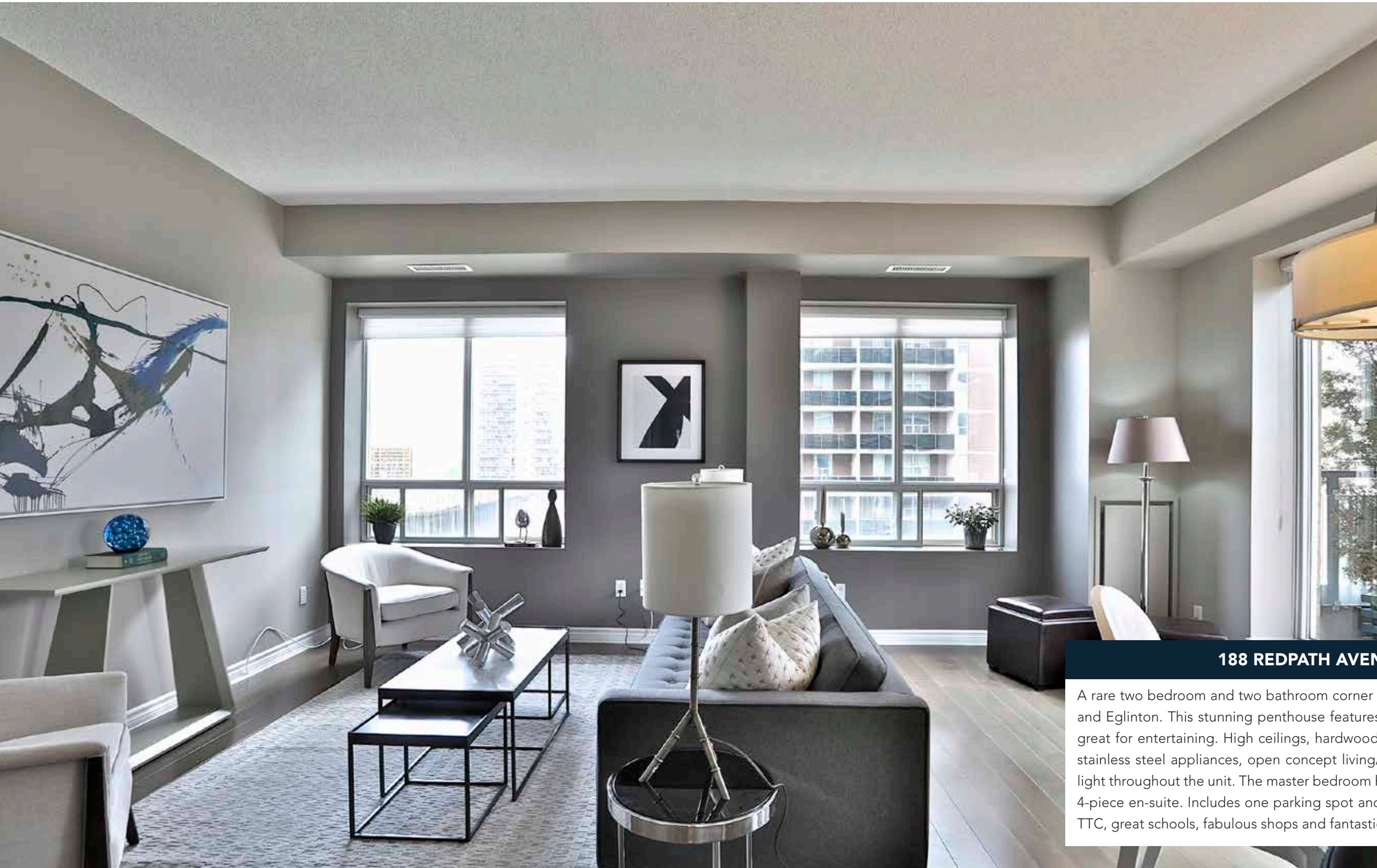


188 REDPATH AVENUE PH9





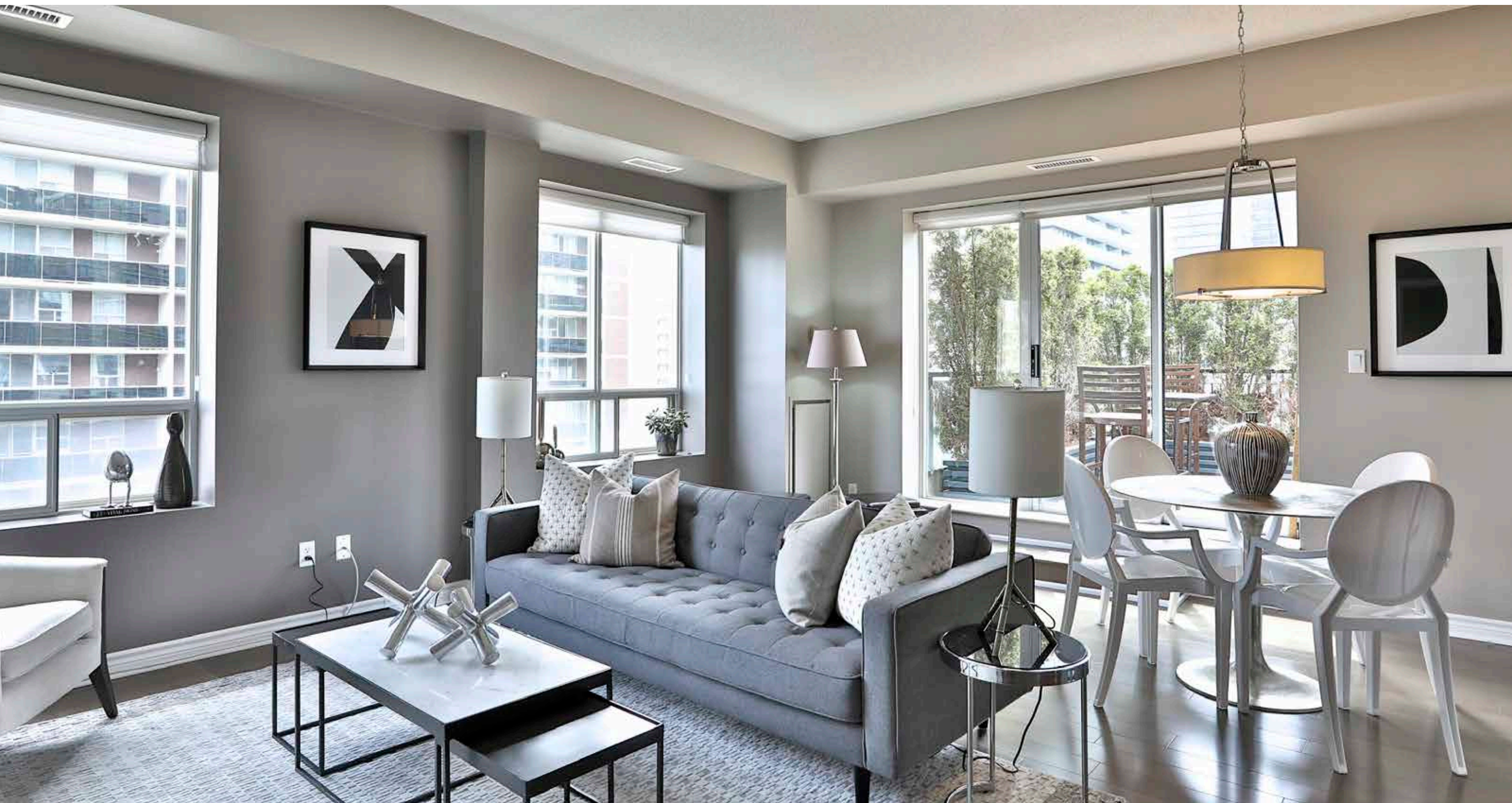
188 REDPATH AVENUE PH9

A rare two bedroom and two bathroom corner Penthouse in the heart of Yonge and Eglinton. This stunning penthouse features a walk-out to a private terrace, great for entertaining. High ceilings, hardwood floors, an updated kitchen with stainless steel appliances, open concept living/dining room and lots of natural light throughout the unit. The master bedroom has a walk-in closet and luxurious 4-piece en-suite. Includes one parking spot and one locker. Just minutes to the TTC, great schools, fabulous shops and fantastic restaurants!

KITCHEN

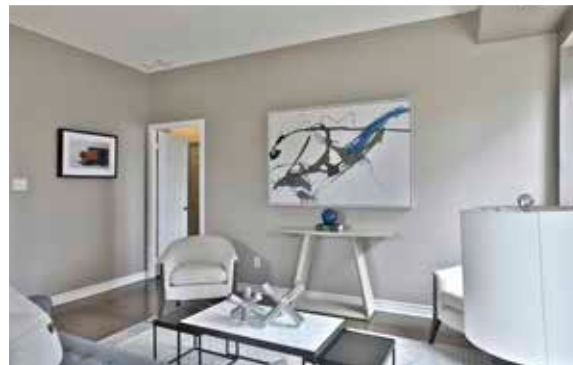
- Hardwood floors
- Bosch microwave
- Bosch dishwasher
- Whirlpool oven
- Bosch cooktop
- Whirlpool fridge/freezer
- Quartz countertop





LIVING/DINING

- Hardwood floors
- Open concept
- Walk-out to oversized terrace
- Two large windows that bring in an abundance of natural sunlight





MASTER BEDROOM

- Hardwood floors
- Large window
- Walk-in closet with organizers
- 4 piece ensuite
- Linen closet



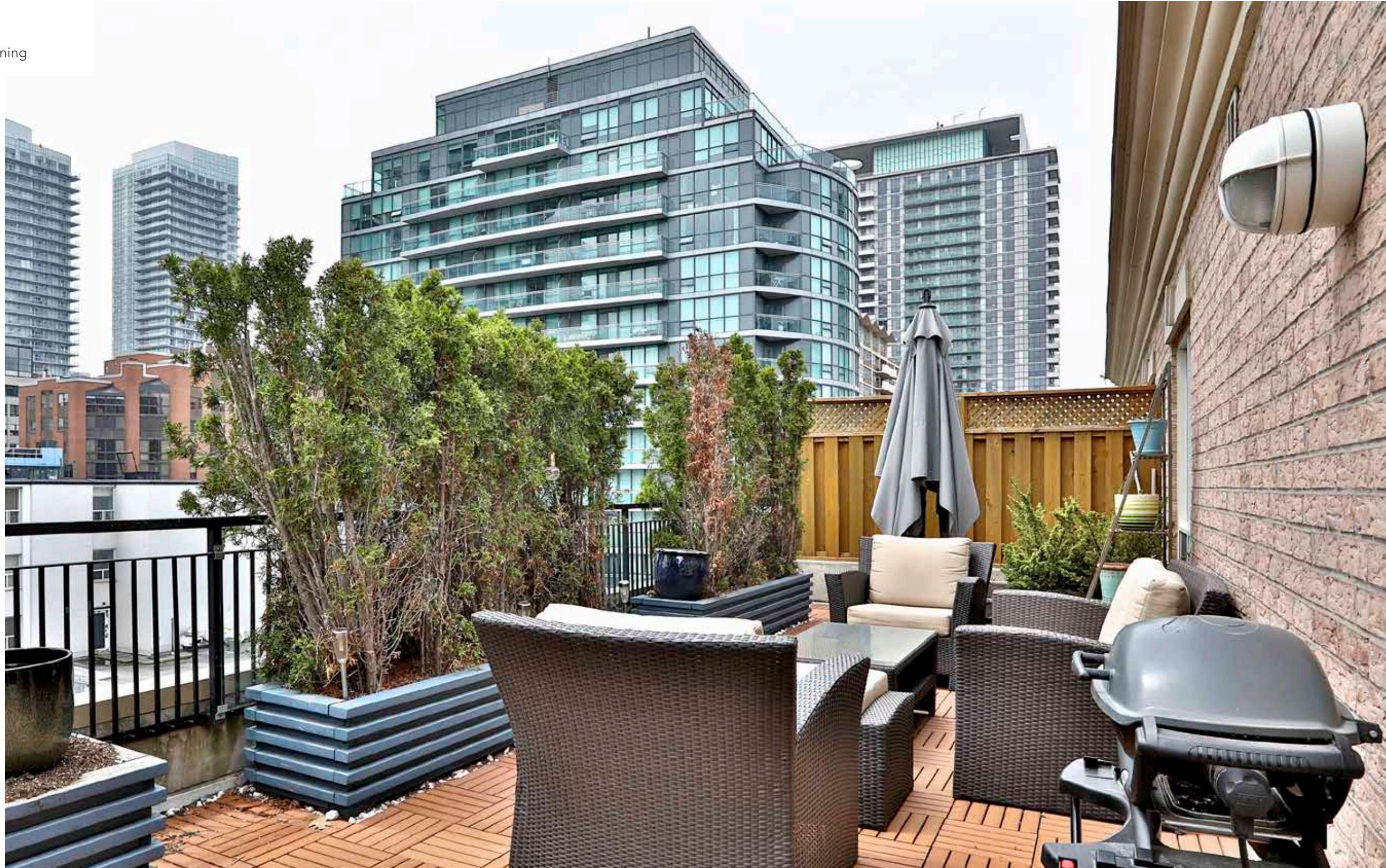
SECOND BEDROOM

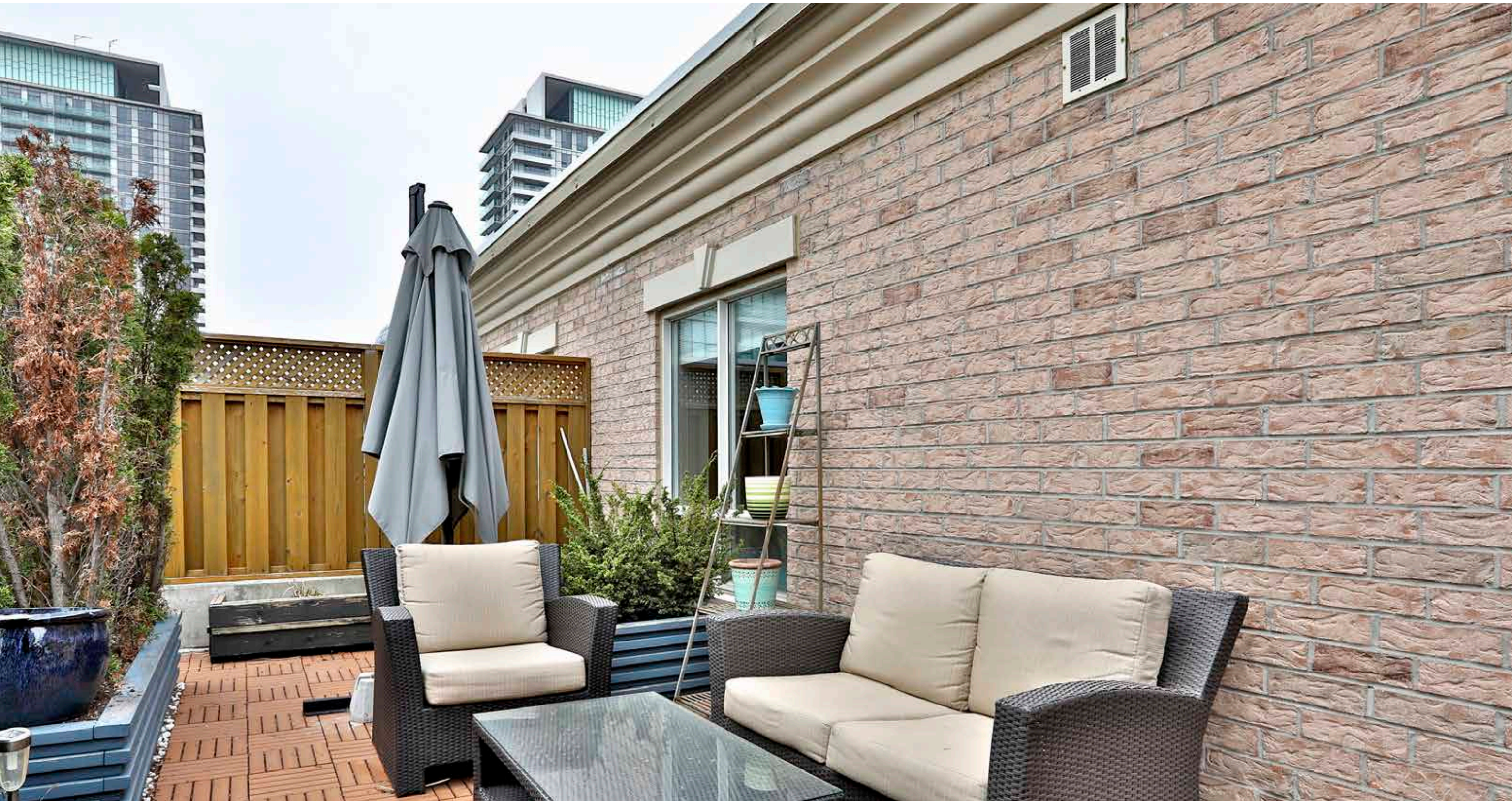
- Hardwood floors
- Large window
- Overlooks patio



TERRACE

- South East view
- Wood floor
- Very private, great for entertaining



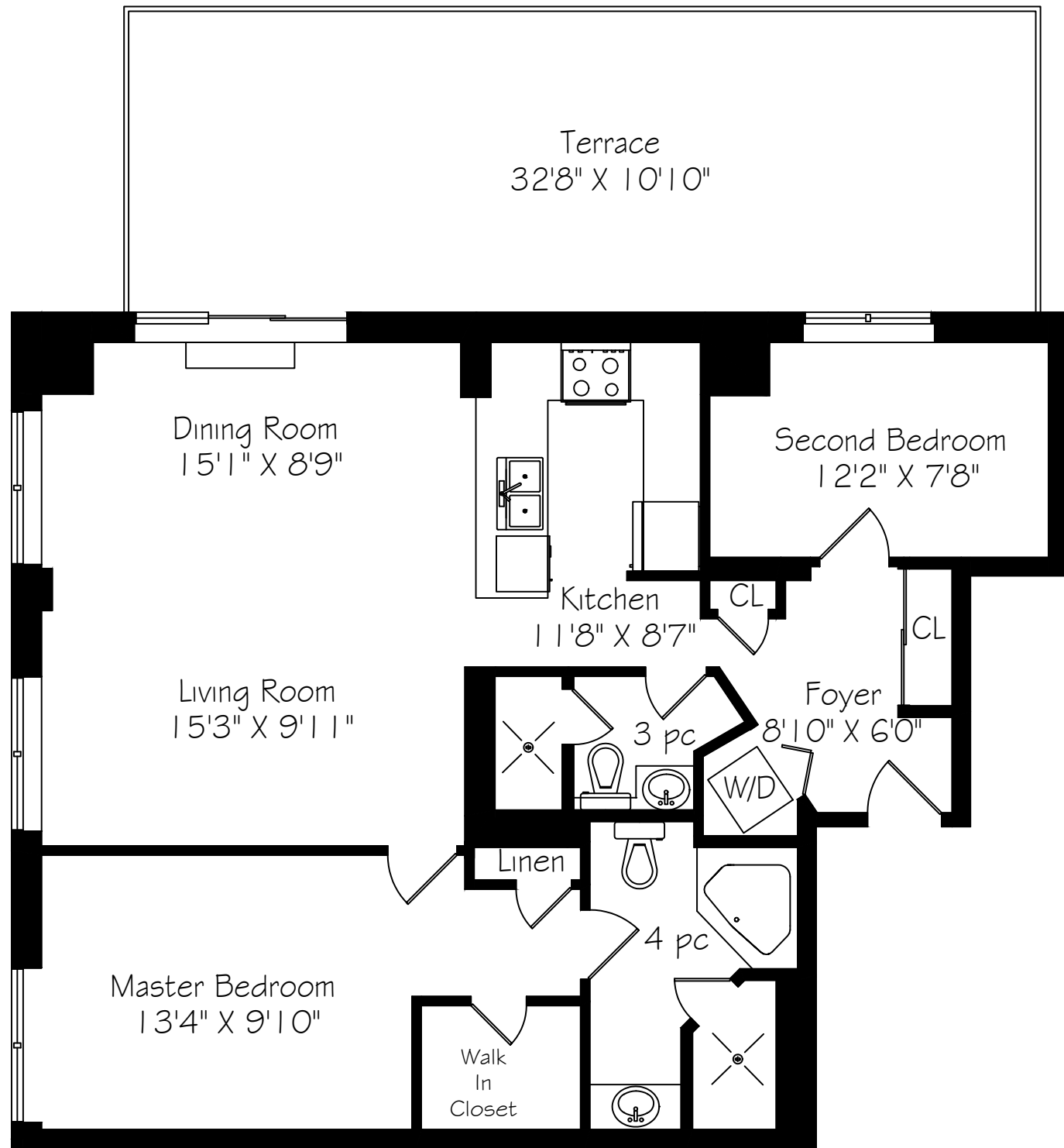


ADDITIONAL INFORMATION

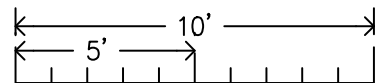
- Stackable Bosch washer/dryer
- 3-piece bathroom
- Large closet in entranceway
- Linen closet







Suite PH9
988 Square Feet





Measurements and Calculations are approximate
To be used as guidelines only

ADAM PARSONS GROUP

416.646.8837

ADAMPARSONS.ca

  @adamparsonsgroup

Not intended to solicit properties currently listed for sale or individuals currently under contract with a Brokerage.

BOSLEY BOSLEY REAL ESTATE
REAL ESTATE ADAM PARSONS GROUP
BROKERAGE INC.



SIERRA PARSONS
SALES REPRESENTATIVE

ADAM PARSONS
BROKER OF RECORD

BIANCA PARSONS
SALES REPRESENTATIVE