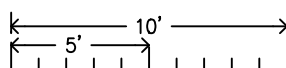
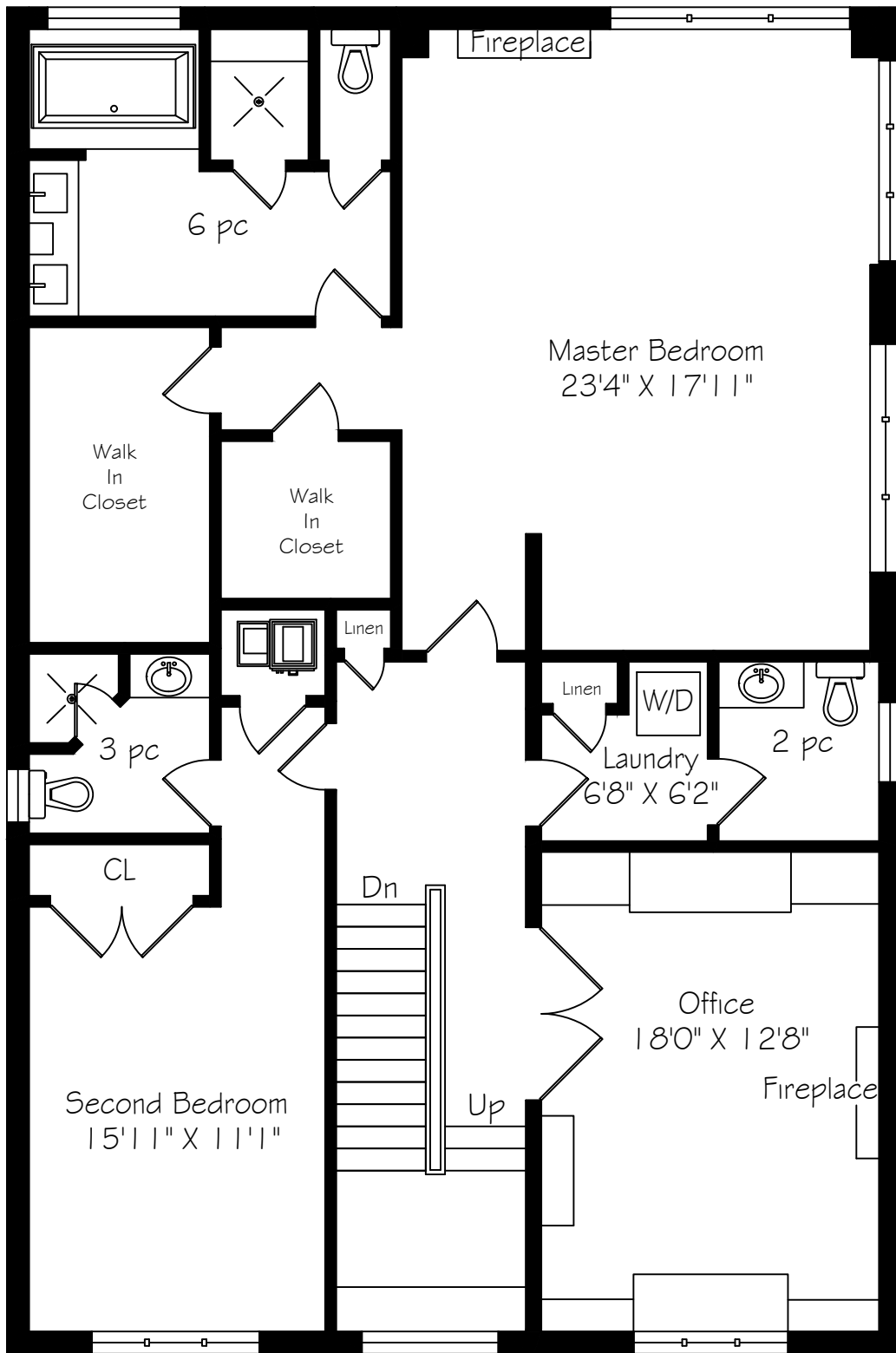


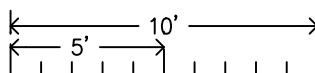
Main Floor  
1830 Square Feet



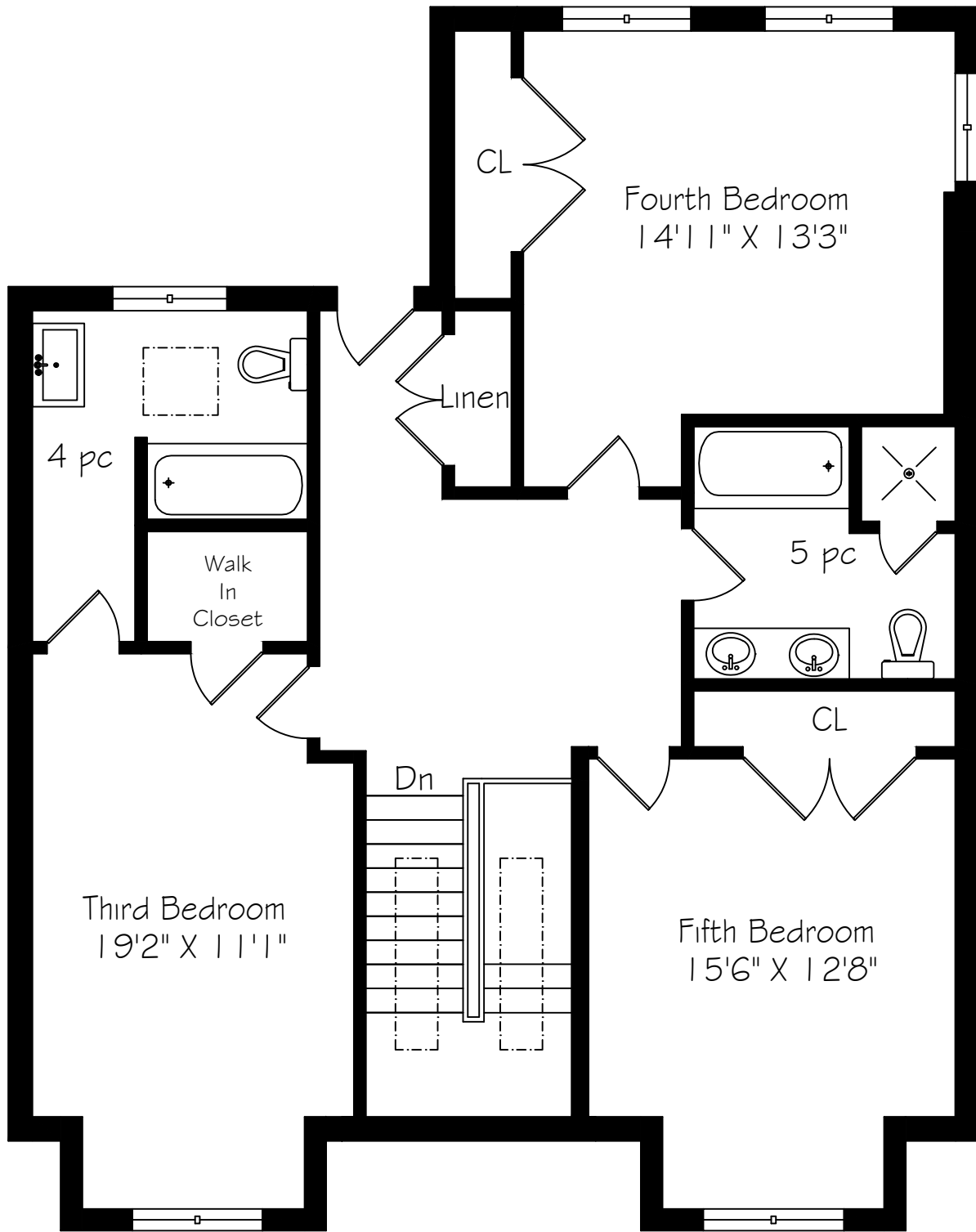
Measurements and Calculations are approximate  
To be used as guidelines only



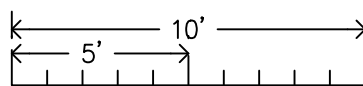
Second Floor  
1700 Square Feet



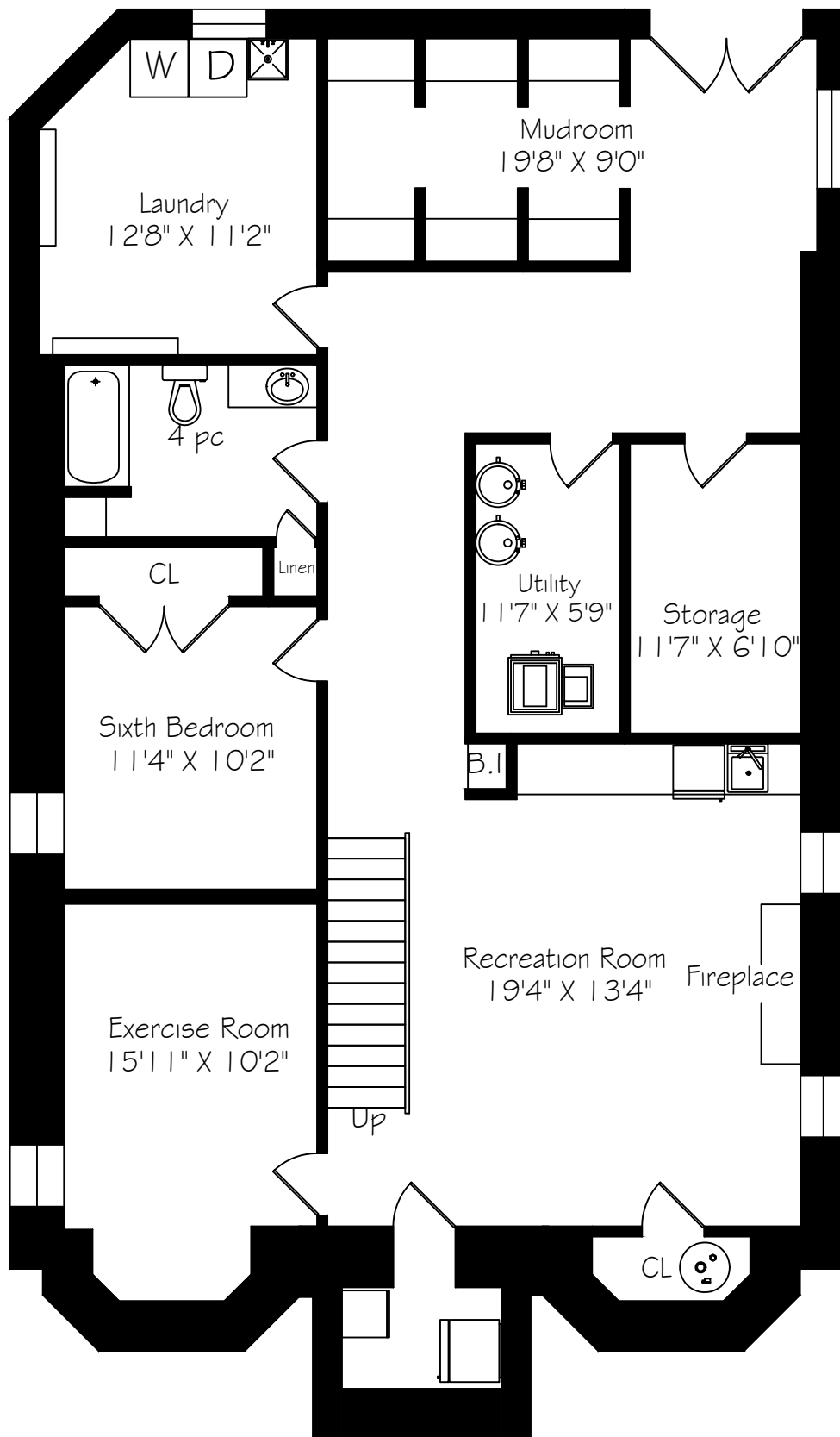
Measurements and Calculations are approximate  
To be used as guidelines only



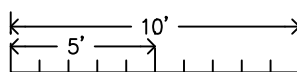
Third Floor  
1234 Square Feet



Measurements and Calculations are approximate  
To be used as guidelines only



Lower Level  
1810 Square Feet



Measurements and Calculations are approximate  
To be used as guidelines only

# Metric Conversions for 229 Glenrose Avenue

Measurements and Calculations are approximate

To be used as guidelines only



[www.measuredup.ca](http://www.measuredup.ca)

416-985-9859

	IMPERIAL			METRIC				
<b>Main Floor</b>	1830	sf		170	sqm		Ceiling Height	8'7"
Foyer	7'	7"	x 4' 10"	2.31	x	1.47		
Kitchen	22'	10"	x 12' 5"	6.96	x	3.78		
Breakfast Area	19'	5"	x 10' 0"	5.92	x	3.05		
Living Room	20'	11"	x 11' 10"	6.38	x	3.61		
Dining Room	21'	2"	x 11' 1"	6.45	x	3.38		
Family Room	19'	5"	x 15' 7"	5.92	x	4.75		
Pantry	11'	1"	x 6' 11"	3.38	x	2.11		
<b>Second Floor</b>	1700	sf		158	sqm		Ceiling Height	8'10"
Master Bedroom	23'	4"	x 17' 11"	7.11	x	5.46		
Second Bedroom	15'	11"	x 11' 1"	4.85	x	3.38		
Office	18'	0"	x 12' 8"	5.49	x	3.86		
<b>Third Floor</b>	1234	sf		115	sqm		Ceiling Height	10'10"
Third Bedroom	19'	2"	x 11' 1"	5.84	x	3.38		
Fourth Bedroom	14'	11"	x 13' 3"	4.55	x	4.04		
Fifth Bedroom	15'	6"	x 12' 8"	4.72	x	3.86		
						0.00		
<b>Lower Level</b>	1810	sf		168	sqm		Ceiling Height	7'4"
Recreation Room	19'	4"	x 13' 4"	5.89	x	4.06		
Sixth Bedroom	11'	4"	x 10' 2"	3.45	x	3.10		
Exercise Room	15'	11"	x 10' 2"	4.85	x	3.10		
Laundry Room	12'	8"	x 11' 2"	3.86	x	3.40		
Mudroom	19'	8"	x 9' 0"	5.99	x	2.74		
Utility Room	11'	7"	x 5' 9"	3.53	x	1.75		
Storage	11'	7"	x 6' 10"	3.53	x	2.08		
<b>Total Square Footage</b>	6574	sf		611	sqm			May 2, 2019