

ADAM *Parsons* PARSONS GROUP



WELCOME TO
100 Redpath Avenue Unit 6





100 Redpath Avenue Unit 6

This lovely townhome is located at Yonge and Eglinton. A midtown neighbourhood consisting of many new shops, restaurants, amenities and great schools. With direct access to the subway and now the upcoming LRT-train line this area is fast becoming a major hub in the city. This townhome is in move in condition, having multiple upgrades and renovations with its own private entrance. The main floor is open concept having new floors throughout, the kitchen having stainless steel appliances, new fixtures, and a quaint living and dining room area great for entertaining. The second level consists of an updated bathroom and two bedrooms each having their own closet and window making each room very bright. A great opportunity to live in one of the most desirable neighbourhoods in the city!

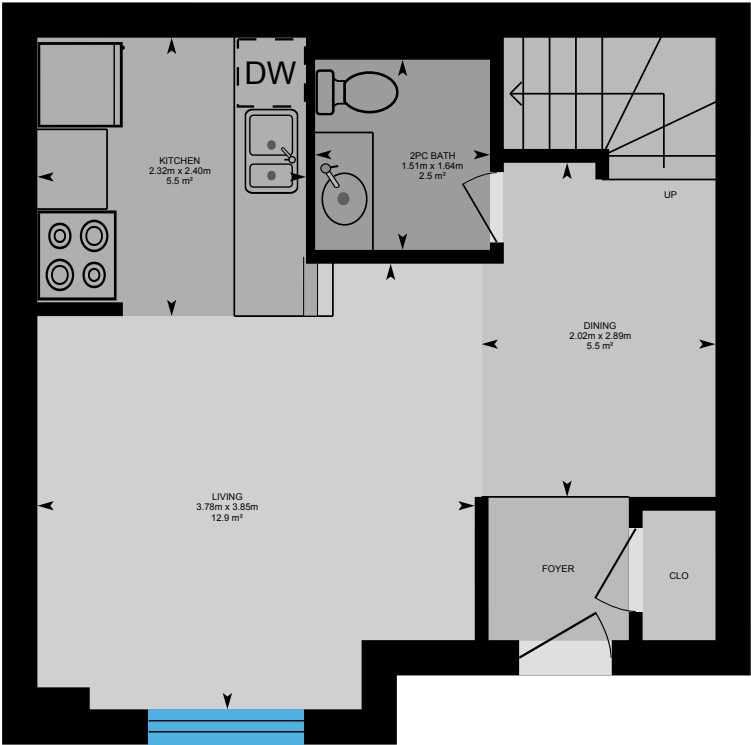












1st Floor
Exterior Area 39.2 m²



2nd Floor
Exterior Area 39.0 m²

Details of the home

- Taxes: \$2,620.71
- Possession: Flexible
- Heating: Forced air gas
- Cooling: Central Air
- Bedrooms: 2
- Bathrooms: 2
- 1 Parking spot
- Private entrance
- New counter tops in kitchen
- New back splash and sink in kitchen
- Updates to both bathrooms
- New floors throughout
- New fixtures throughout
- Stainless steel appliances
- GE stove
- GE fridge and freezer
- GE dishwasher
- LG washer and dryer



ADAM PARSONS GROUP

Adam Parsons
BROKER OF RECORD

Sierra Parsons
SALES REPRESENTATIVE

Bianca Parsons
SALES REPRESENTATIVE

416.646.8837 | ADAMPARSONS.CA | ADAMPARSONSGROUP  



BOSLEY

REAL ESTATE

Not intended to solicit properties currently listed for sale or individuals currently under contract with a Brokerage.